

中胜五金锁业有限公司

ZHONG SHENG LOCKS CO.,LTD.

地址: 浙江省丽水市青田县温溪镇港头工业区

Add: Gangtou Industry Zone Wenxi Town Qingtian County

Lishui City Zhejiang Province

电话(Tel): 0578-6732862 0578-6732863

传真(Fax): 0578-6732861

邮箱(E-mail): zslocks@qq.com

QQ: 49619227 Wechat: zslocks Skype: chenqian312

网址(http://www.zslocks.com



zhongsheng

LOCKS
Hardware high-quality

New's products

ZHONG SHENG LOCKS CO.,LTD



zhongsheng

LOCKS
Hardware high-quality

New's products

ZHONG SHENG LOCKS CO.,LTD

中胜五金锁业有限公司

ZHONG SHENG LOCKS CO.,LTD.

我们的使命: 弘扬工业精神, 不断创新, 为使中国制造成为品质的象征而持续精进。

我们的愿景: 树立行业标杆, 致力于成为中国五金行业值得信赖的领先企业。

我们的价值观: 品质、效率、责任、团队

品质: 塑造好人品, 做好每件事, 成就好产品。

效率: 保证正确的方向, 保证最快的速度, 保证最佳的效果。

责任: 专业职业敬业, 才能成就事业; 尽心尽力尽责, 才能尽享成功。

团队: 以人为本, 大局为重, 相互合作。

经营理念: 一个没有创新的企业是没有灵魂的企业; 一个没有核心技术的企业是没有脊梁的企业; 一个没有精品的企业是没有未来的企业。

人才理念: 具备创新意识和不断进取精神。能者上, 平者让, 庸者下。

管理理念: 用文化凝聚人心, 用制度驾驭人性, 用品牌成就人生。

服务理念: 客户的每一件小事都是我们的大事。

质量理念: “以顾客满意为宗旨, 以持续改进为手段”的质量理念, 用科技进步和标准化管理, 造出客户满意的产品。

专利证书

Office Environment





产品目录

Product Contents
Каталог продукции

| | |
|---|-------|
| 新品系列 Whole Show Series Комплект | 01-04 |
| 锁体系列 Lock Body Series Замки | 05-17 |
| 门把手系列 Whole Show Series Ручки | 18-32 |
| 防护罩系列 Protector Series Накладки | 33-48 |
| 保险栓系列 Safety Switch Series Задвижки | 49-54 |
| 旋钮 Knob Series Поворотники | 53-57 |
| 猫眼 Door Viewer Series Глазки | 59 |
| 锁芯系列 Lock Cyliinder Series Цилиндры | 60 |
| 配件系列 Fitting Series Фурнитуры | 61-64 |



办公环境 Office Environment

舒适的办公环境, 现代化的办公设施造就和谐的工作氛围。

First-class office environment, Modern office facilities created an atmosphere of harmony.



生产车间设备

Production Eorkshop
Equipment

中胜拥有模具、压铸、抛光到电镀的完整生产线,保证了生产的顺畅高效!
The company has the complete production line of mould, die casting, polishing and electroplating, ensuring the smooth and efficient production.

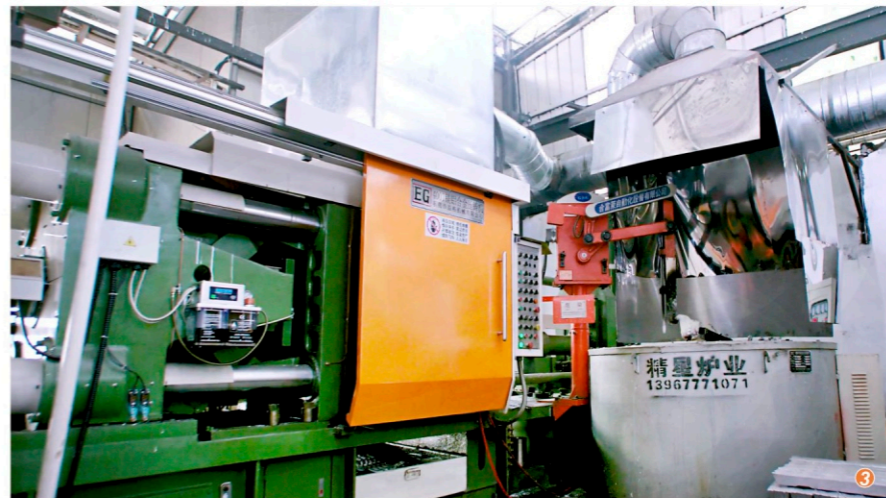
① 冲压车间 | Stamping workshop
цех штампования



② 模具车间 | Mould workshop
цех матриц



③ 压铸车间 | Die casting workshop
цех литья под давлением



④ 抛光车间 | Polishing workshop
цех полировки



⑤ 装配车间 | Assembly shop
цех сбора



⑥ 包装车间 | Packing workshop
цех упаковки



以人为本 People oriented

丰富多彩的员工生活
Colorful staff life



21 Series



16-21



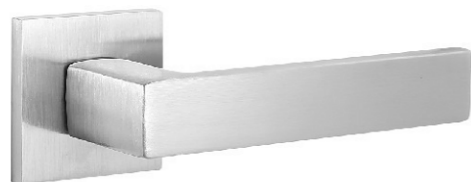
ZS21-HL



ZS21



ZS21



FZ21-241



FZ21-177

17 Series



16-7



ZS17-HL



ZS17



ZS17



FZ17-233



177

18 Series



16-8



ZS18-HL



ZS18



ZS18



FZ18-233



FZ18-186

13 Series



17-2



ZS13-HL



ZS13



ZS13



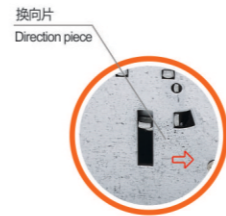
207



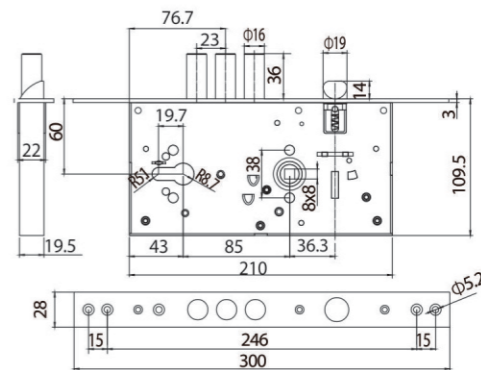
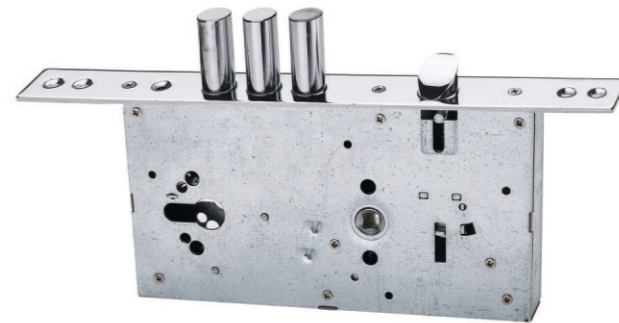
FZ13-126



FZ13-233

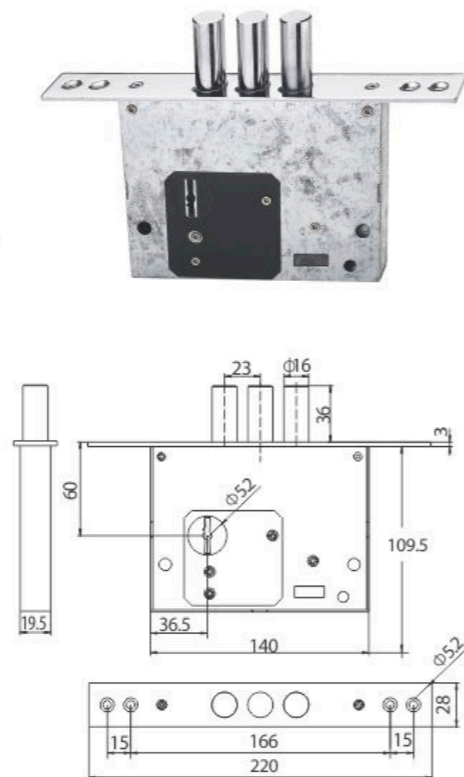


803/703

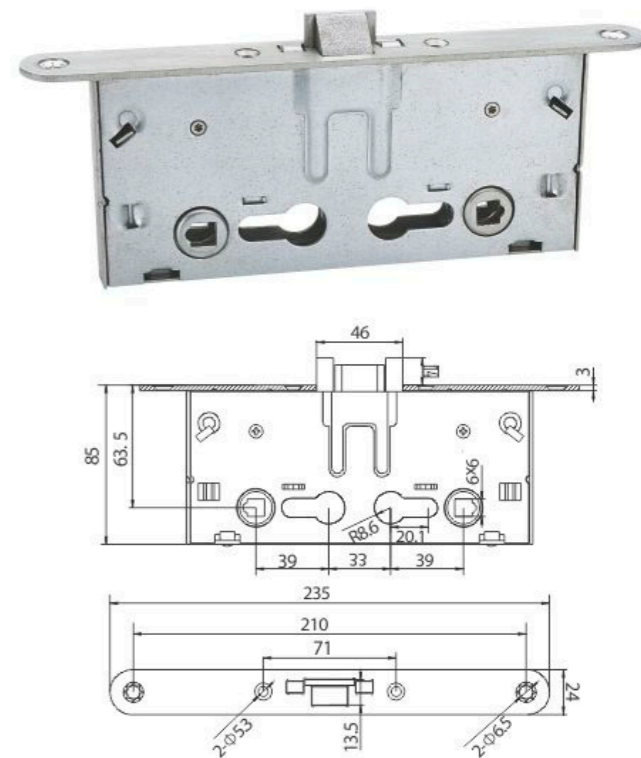




806/706

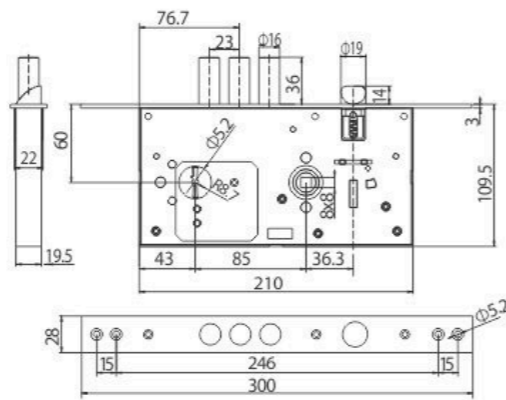


815

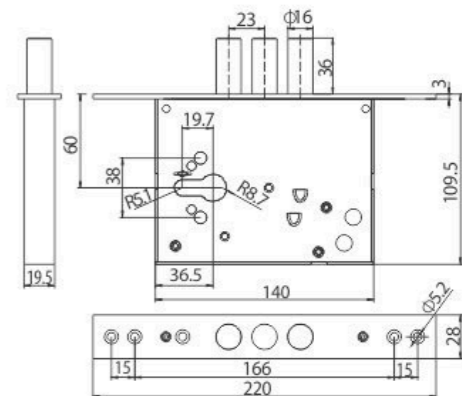
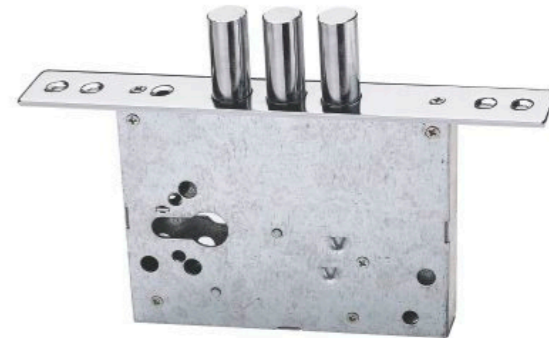




804/704

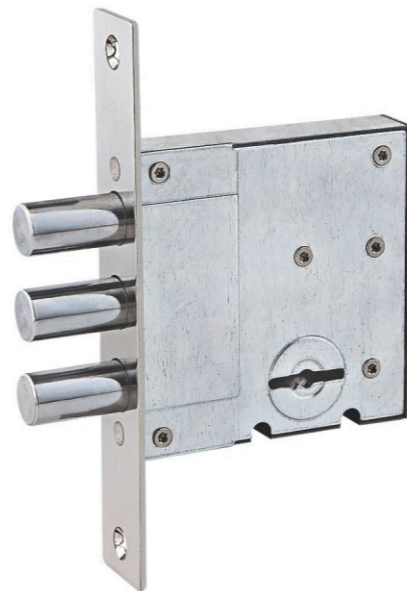
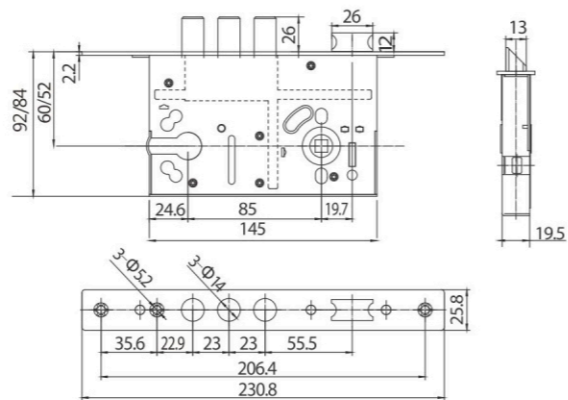
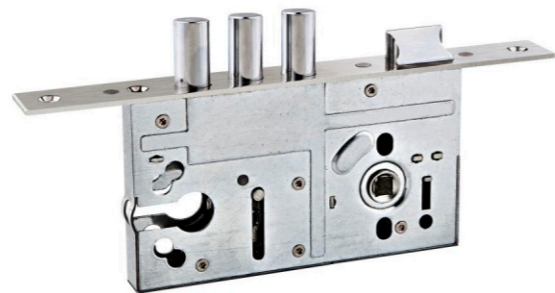


805/705

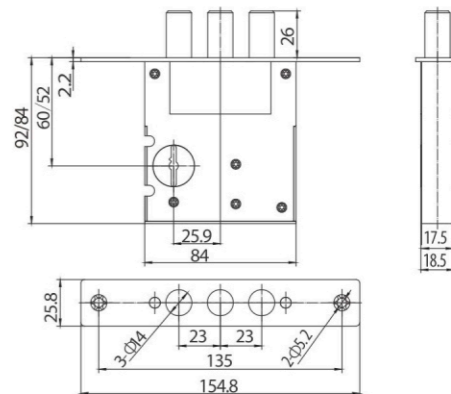




811/813

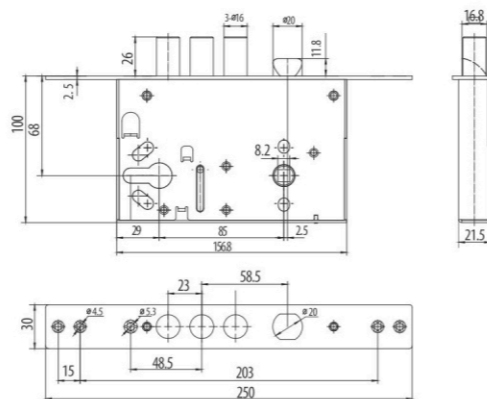
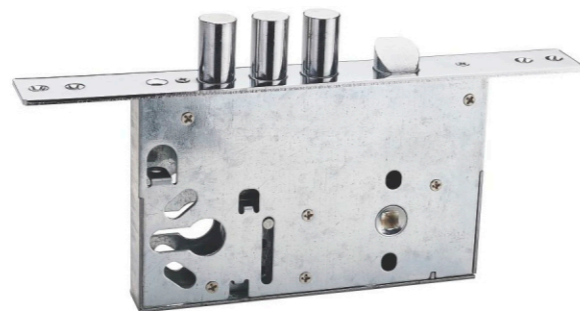


812/814

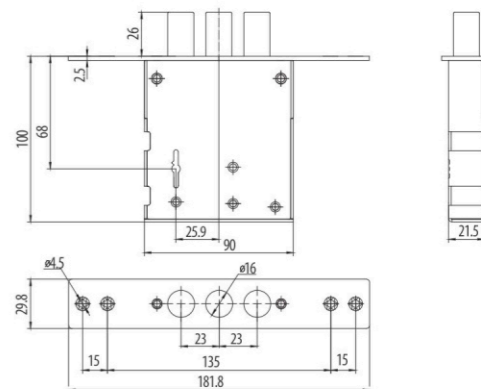




816



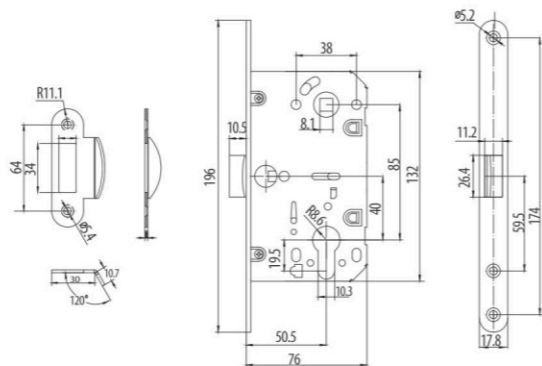
817



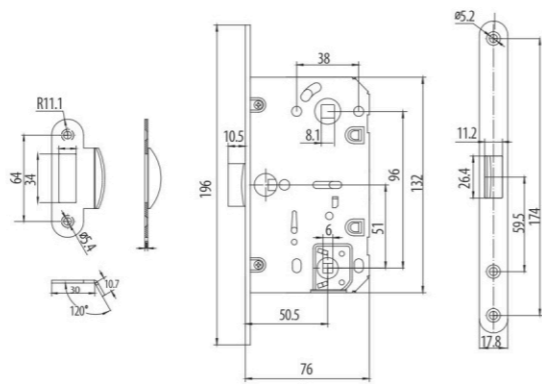


821-C

821-T



821-C

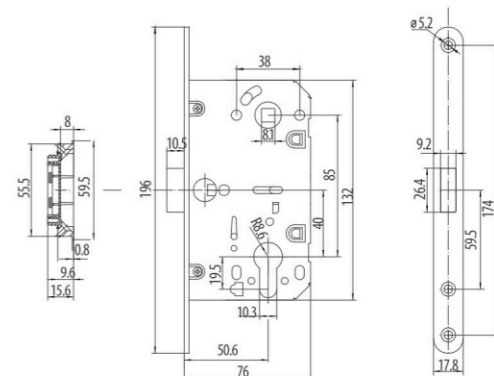


821-T

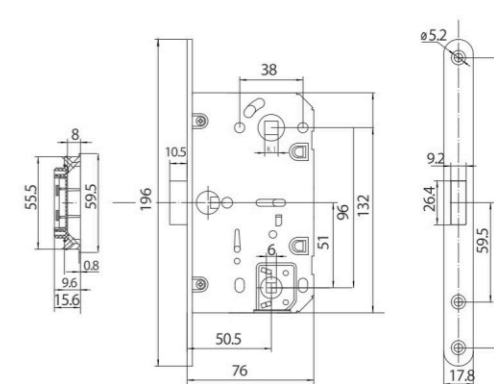


822-C

822-T



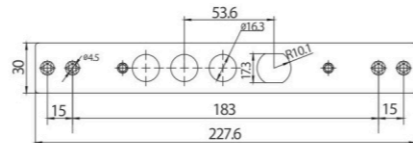
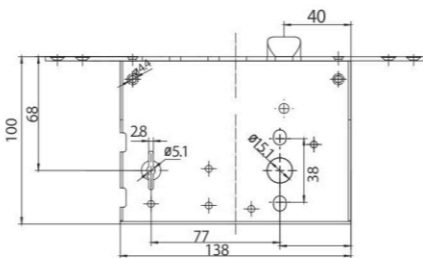
822-C



822-T



818



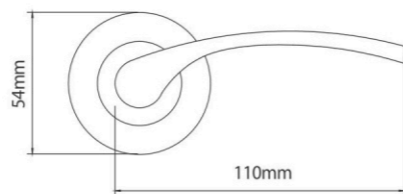
门把手系列
Handle Series
Ручки





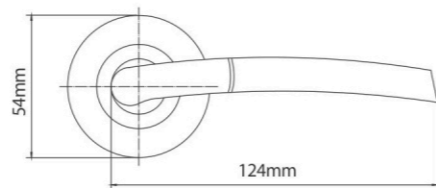
FZ8-46-A

材质: 铝合金 | Material: Aluminum Alloy
颜色: 青古铜/仿金/亮铬 | Color: AB、GP、CP
Материал: алюминий
Цвет: AB、GP、CP

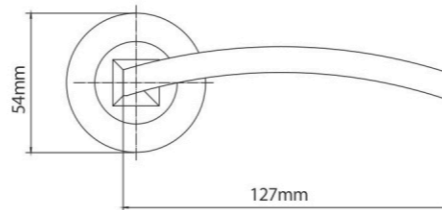


FZ8-220

材质: 铝合金 | Material: Aluminum Alloy
颜色: 青古铜/仿金/亮铬 | Color: AB、GP、CP
Материал: алюминий
Цвет: AB、GP、CP

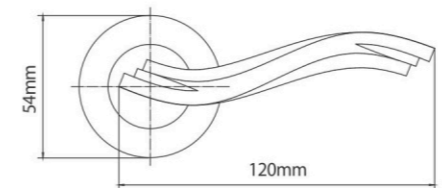


材质: 铝合金 | Material: Aluminum Alloy
颜色: 青古铜/仿金/亮铬 | Color: AB、GP、CP
Материал: алюминий
Цвет: AB、GP、CP



FZ8-217

材质: 铝合金 | Material: Aluminum Alloy
颜色: 青古铜/仿金/亮铬 | Color: AB、GP、CP
Материал: алюминий
Цвет: AB、GP、CP

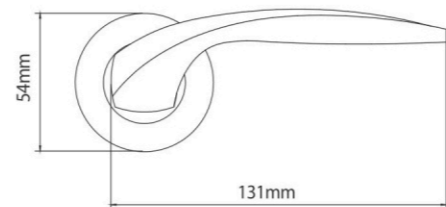


FZ8-222



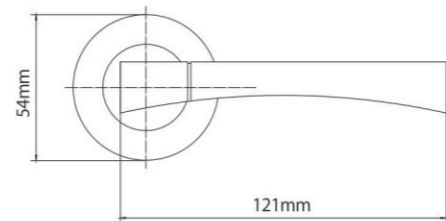
FZ8-212

材质: 铝合金 | Material: Aluminum Alloy
颜色: 青古铜/仿金/亮铬 | Color: AB、GP、CP
Материал: алюминий
Цвет: AB、GP、CP

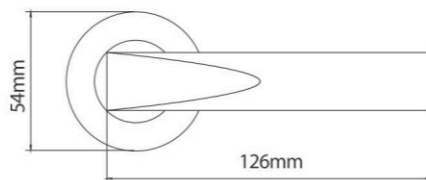


FZ8-218

材质: 铝合金 | Material: Aluminum Alloy
颜色: 青古铜/仿金/亮铬 | Color: AB、GP、CP
Материал: алюминий
Цвет: AB、GP、CP

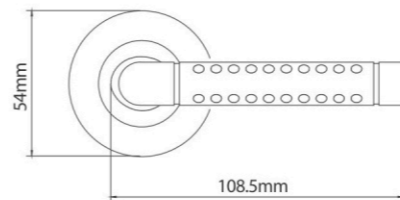


材质: 铝合金 | Material: Aluminum Alloy
颜色: 青古铜/仿金/亮铬 | Color: AB、GP、CP
Материал: алюминий
Цвет: AB、GP、CP



FZ8-219

材质: 铝合金 | Material: Aluminum Alloy
颜色: 青古铜/仿金/亮铬 | Color: AB、GP、CP
Материал: алюминий
Цвет: AB、GP、CP

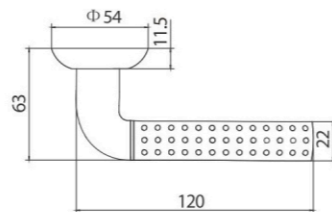


FZ8-211



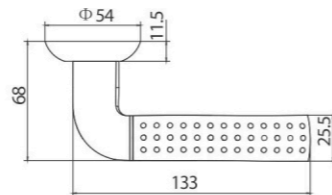
FZ8-108S

材质: 铝合金 | Material: Aluminum Alloy
颜色: 青古铜/仿金/亮铬 | Color: AB、GP、CP
Материал: алюминий
Цвет: AB、GP、CP

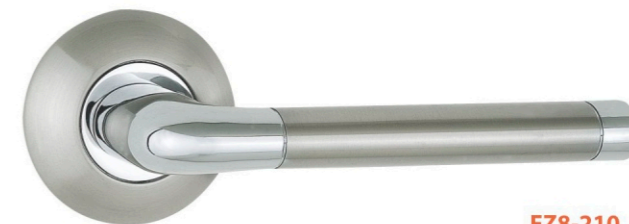
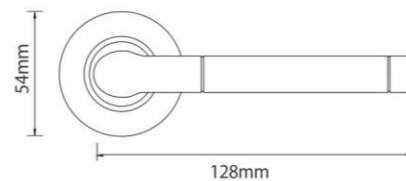


FZ8-108M

材质: 铝合金 | Material: Aluminum Alloy
颜色: 青古铜/仿金/亮铬 | Color: AB、GP、CP
Материал: алюминий
Цвет: AB、GP、CP

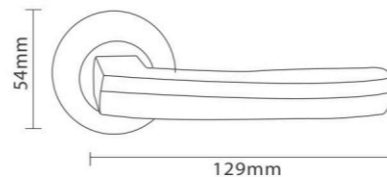


材质: 铝合金 | Material: Aluminum Alloy
颜色: 青古铜/仿金/亮铬 | Color: AB、GP、CP
Материал: алюминий
Цвет: AB、GP、CP



FZ8-210

材质: 铝合金 | Material: Aluminum Alloy
颜色: 青古铜/仿金/亮铬 | Color: AB、GP、CP
Материал: алюминий
Цвет: AB、GP、CP

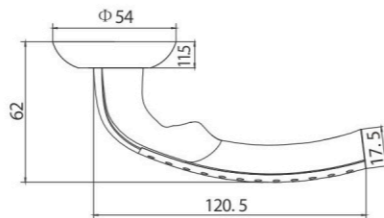


FZ8-119



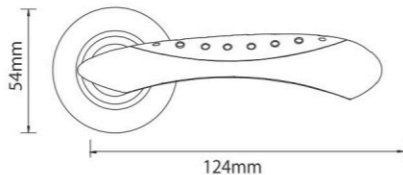
FZ8-128

材质: 铝合金 | Material: Aluminum Alloy
颜色: 青古铜/仿金/亮铬 | Color: AB、GP、CP
Материал: алюминий
Цвет: AB、GP、CP

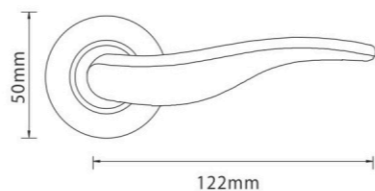


FZ8-116

材质: 铝合金 | Material: Aluminum Alloy
颜色: 青古铜/仿金/亮铬 | Color: AB、GP、CP
Материал: алюминий
Цвет: AB、GP、CP

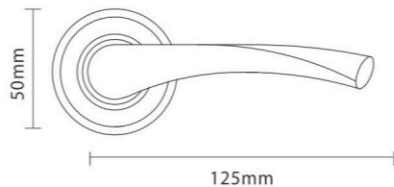


材质: 铝合金 | Material: Aluminum Alloy
颜色: 青古铜/仿金/亮铬 | Color: AB、GP、CP
Материал: алюминий
Цвет: AB、GP、CP



FZ8-115

材质: 铝合金 | Material: Aluminum Alloy
颜色: 青古铜/仿金/亮铬 | Color: AB、GP、CP
Материал: алюминий
Цвет: AB、GP、CP

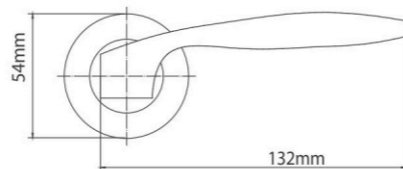


FZ8-45



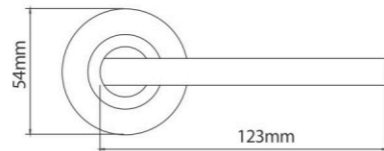
FZ8-117

材质: 铝合金 | Material: Aluminum Alloy
颜色: 青古铜/仿金/亮铬 | Color: AB、GP、CP
Материал: алюминий
Цвет: AB、GP、CP

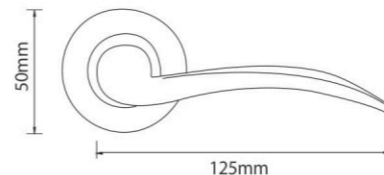


FZ8-157

材质: 铝合金 | Material: Aluminum Alloy
颜色: 青古铜/仿金/亮铬 | Color: AB、GP、CP
Материал: алюминий
Цвет: AB、GP、CP

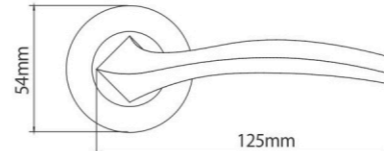


材质: 铝合金 | Material: Aluminum Alloy
颜色: 青古铜/仿金/亮铬 | Color: AB、GP、CP
Материал: алюминий
Цвет: AB、GP、CP



FZ8-44

材质: 铝合金 | Material: Aluminum Alloy
颜色: 青古铜/仿金/亮铬 | Color: AB、GP、CP
Материал: алюминий
Цвет: AB、GP、CP



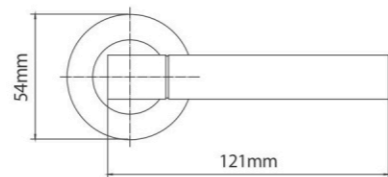
FZ8-216



FZ8-214

材质: 铝合金 | Material: Aluminum Alloy
颜色: 青古铜/仿金/亮铬 | Color: AB、GP、CP

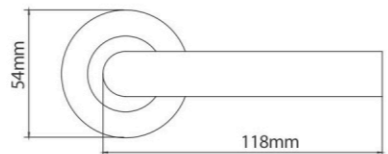
Материал: алюминий
Цвет: AB、GP、CP



FZ8-213

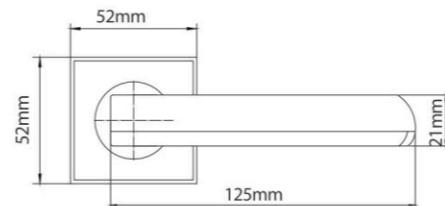
材质: 铝合金 | Material: Aluminum Alloy
颜色: 青古铜/仿金/亮铬 | Color: AB、GP、CP

Материал: алюминий
Цвет: AB、GP、CP



材质: 锌合金/铝合金 | Material: Zinc Alloy/Aluminum Alloy
颜色: 青古铜/仿金/亮铬 | Color: AB、GP、CP

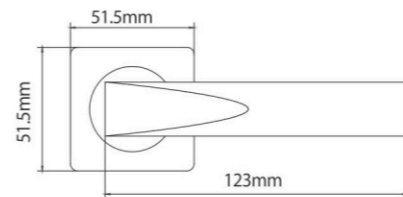
Материал: цинковый сплав/алюминий
Цвет: AB、GP、CP



FZ13-119

材质: 铝合金 | Material: Aluminum Alloy
颜色: 青古铜/仿金/亮铬 | Color: AB、GP、CP

Материал: алюминий
Цвет: AB、GP、CP



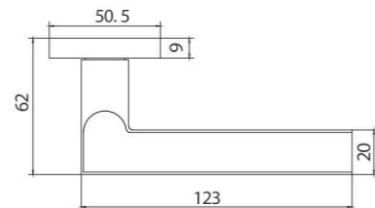
FZ14-219



FZ14-157

材质: 铝合金 | Material: Aluminum Alloy
颜色: 青古铜/仿金/亮铬 | Color: AB、GP、CP

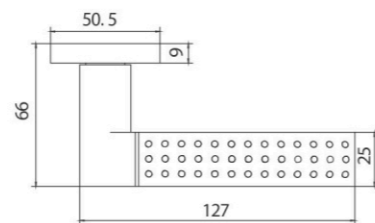
Материал: алюминий
Цвет: AB、GP、CP



FZ14-158

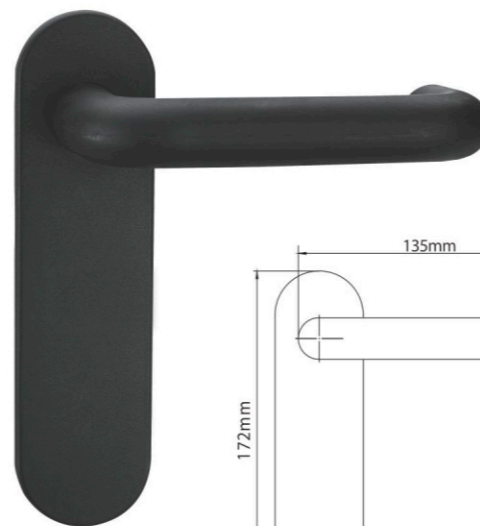
材质: 铝合金 | Material: Aluminum Alloy
颜色: 青古铜/仿金/亮铬 | Color: AB、GP、CP

Материал: алюминий
Цвет: AB、GP、CP

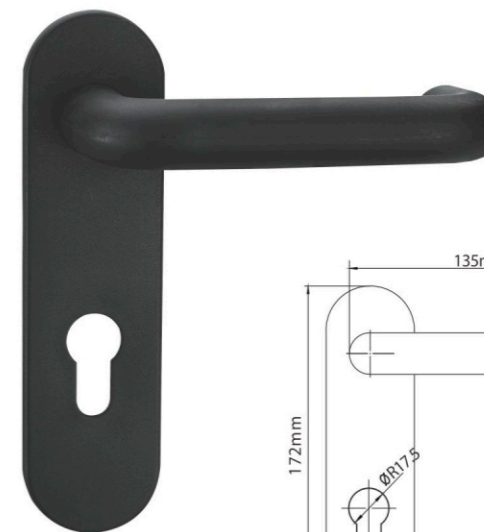
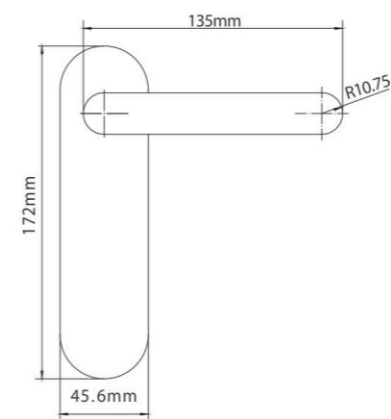


材质: 塑料 | Material: Plastic
颜色: 青古铜/仿金/亮铬 | Color: BL、WH

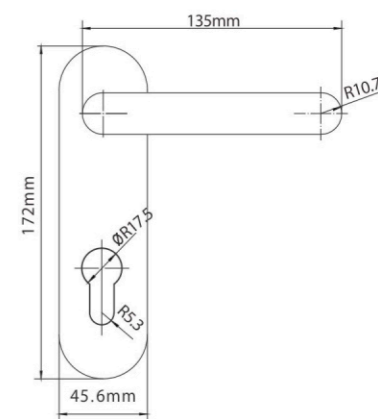
Материал: пластик
Цвет: чёрный, белый



S100-203



S100-203



防护罩系列
Protector Series
Накладки



12-1/12-2/12-3/12-4

材质: 锌合金

颜色: 青古铜/仿金/亮铬

Surface Material: Zinc Alloy

Finished: AB、GP、CP

Материал поверхности:
цинковый сплав

Цвет: AB、GP、CP



12-5

材质:

铁/锌合金/铝合金

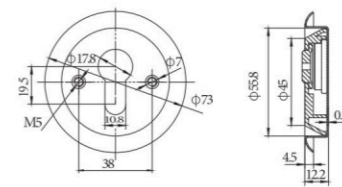
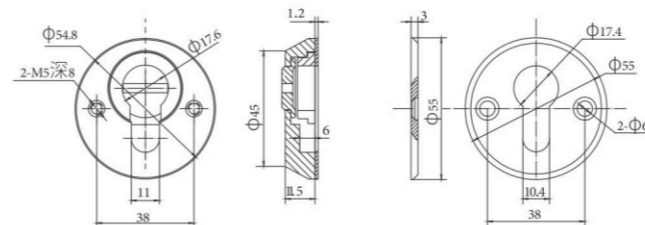
颜色: 青古铜/仿金/亮铬

Material: Iron/Zinc Alloy
/Aluminum Alloy

Finished: AB、GP、CP

Материал поверхности:
латунь, железо, алюминий

Цвет: AB、GP、CP





16-1



装饰片底壳
Decorative Piece Back Shell
规格 Spec.1
尺寸 Size:24.5



16-2



ZS2-HL

205

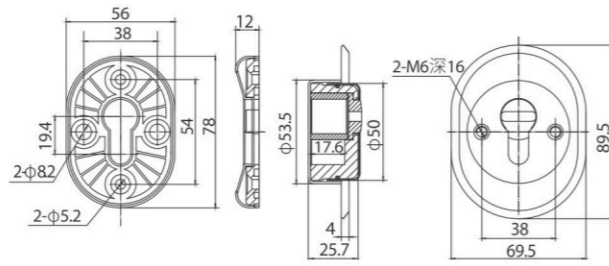
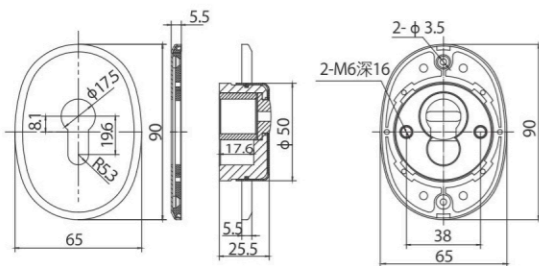
ZS4

后盖护罩选择:
Protectors choice
ZS2-HL
205
ZS4

材质:
铜/铁/锌合金
颜色:青古铜/仿金/亮铬

Material:
Brass/Iron/Zinc Alloy
Finished: AB、GP、CP

Материал поверхности:
циковый сплав, латунь, железо
Цвет: AB、GP、CP

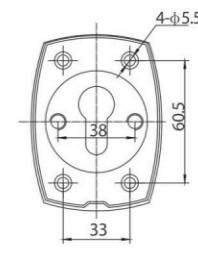
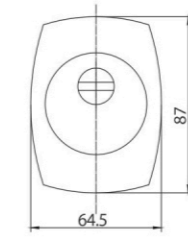
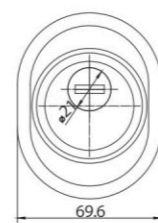
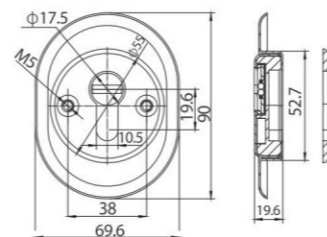


16-5-Y

材质:
铁/锌合金
颜色:青古铜/仿金/亮铬

Material:
Iron/Zinc Alloy
Finished: AB、GP、CP

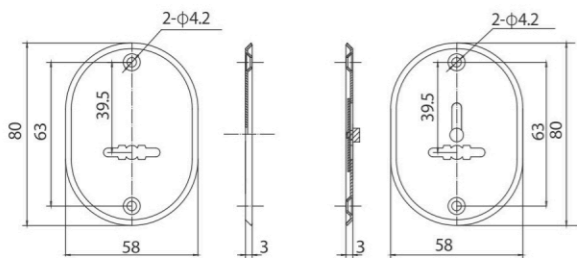
Материал поверхности:
латунь, железо
Цвет: AB、GP、CP





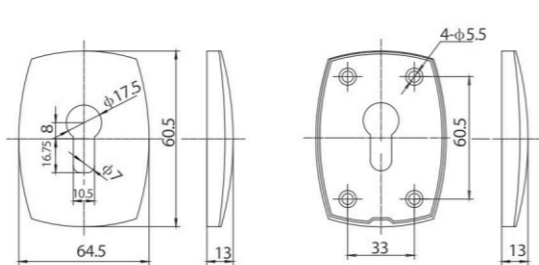
ZS3

材质: 不锈钢 | Material: Stainless Steel | Материал: нержавейка
颜色: 青古铜/仿金/亮铬 | Finished: AB、GP、CP | Цвет: AB、GP、CP



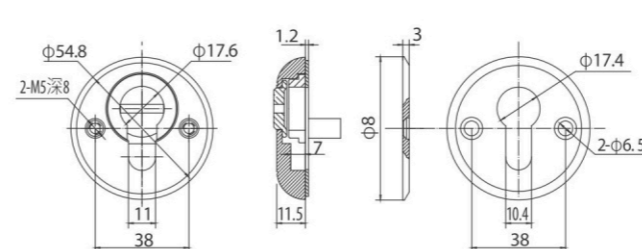
ZS6

材质: 铁 | Material: Iron | Материал: железо
颜色: 青古铜/仿金/亮铬 | Finished: AB、GP、CP | Цвет: AB、GP、CP



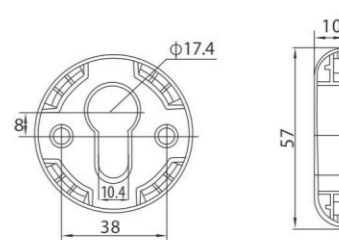
13-1

材质: 锌合金 | Surface Material: Zinc Alloy | Материал поверхности: цинковый сплав
颜色: 青古铜/仿金/亮铬 | Finished: AB、GP、CP | Цвет: AB、GP、CP



121

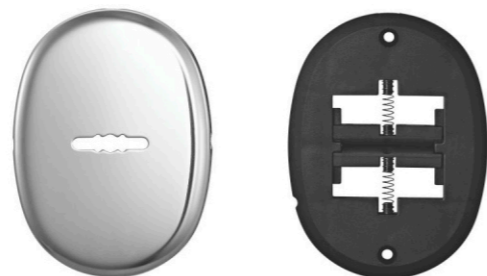
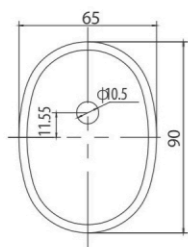
材质: 锌合金 | Material: Zinc | Материал: цинковый сплав
颜色: 青古铜/仿金/亮铬 | Finished: AB、GP、CP | Цвет: AB、GP、CP





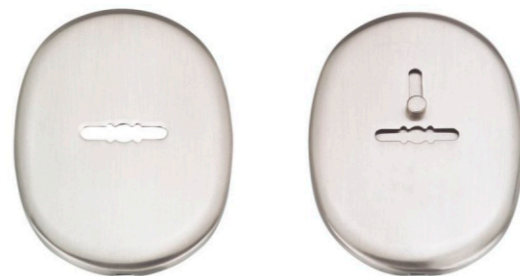
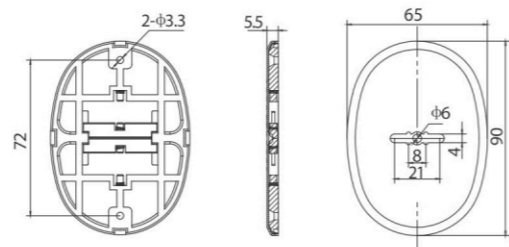
ZS2-Y

材质: 不锈钢 | Material: Stainless Steel | Материал: нержавейка
颜色: 青古铜/仿金/亮铬 | Finished: AB、GP、CP | Цвет: AB、GP、CP



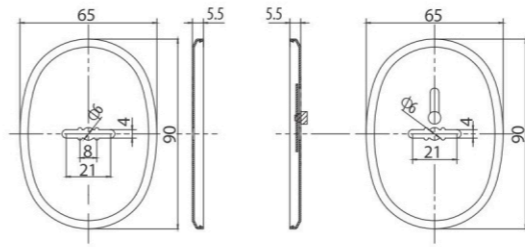
ZS2-X

材质: 不锈钢 | Material: Stainless Steel | Материал: нержавейка
颜色: 青古铜/仿金/亮铬 | Finished: AB、GP、CP | Цвет: AB、GP、CP



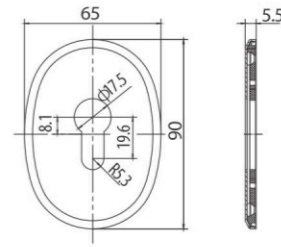
ZS2

材质: 不锈钢 | Material: Stainless Steel | Материал: нержавейка
颜色: 青古铜/仿金/亮铬 | Finished: AB、GP、CP | Цвет: AB、GP、CP



ZS2-HL

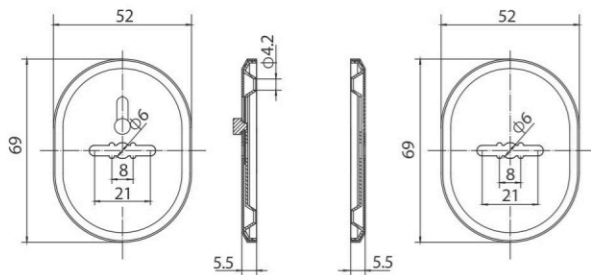
材质: 不锈钢 | Material: Stainless Steel | Материал: нержавейка
颜色: 青古铜/仿金/亮铬 | Finished: AB、GP、CP | Цвет: AB、GP、CP





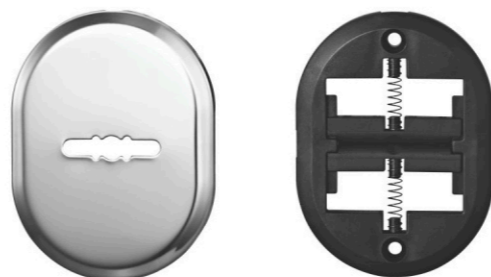
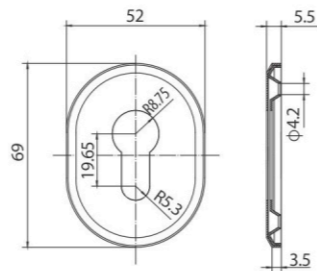
ZS8

材质: 不锈钢 | Material: Stainless Steel | Материал: нержавейка
颜色: 青古铜/仿金/亮铬 | Finished: AB、GP、CP | Цвет: AB、GP、CP



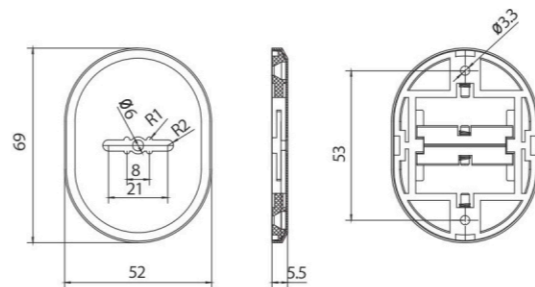
ZS8-HL

材质: 不锈钢 | Material: Stainless Steel | Материал: нержавейка
颜色: 青古铜/仿金/亮铬 | Finished: AB、GP、CP | Цвет: AB、GP、CP



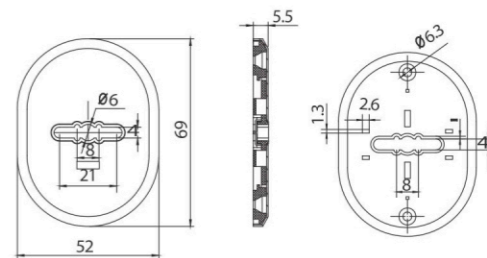
ZS8-X

材质: 不锈钢 | Material: Stainless Steel | Материал: нержавейка
颜色: 青古铜/仿金/亮铬 | Finished: AB、GP、CP | Цвет: AB、GP、CP



ZX8-J

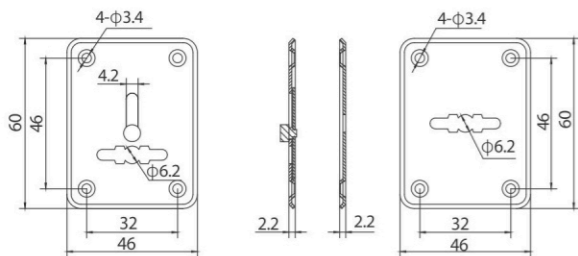
材质: 不锈钢 | Material: Stainless Steel | Материал: нержавейка
颜色: 青古铜/仿金/亮铬 | Finished: AB、GP、CP | Цвет: AB、GP、CP





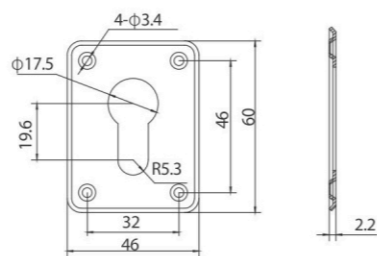
ZS1

材质: 不锈钢 | Material: Stainless Steel | Материал: нержавейка
颜色: 青古铜/仿金/亮铬 | Finished: AB、GP、CP | Цвет: AB、GP、CP



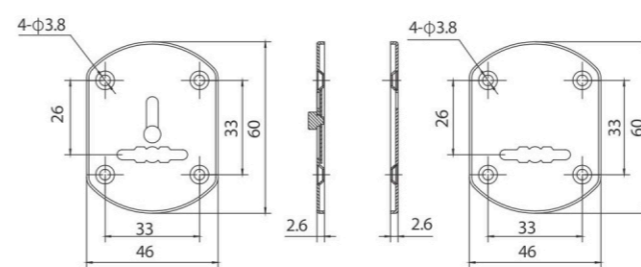
ZS1-HL

材质: 不锈钢 | Material: Stainless Steel | Материал: нержавейка
颜色: 青古铜/仿金/亮铬 | Finished: AB、GP、CP | Цвет: AB、GP、CP



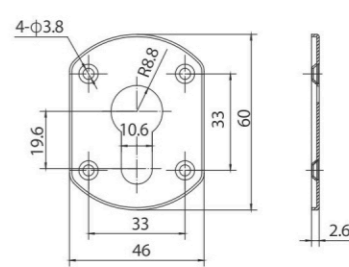
ZS5

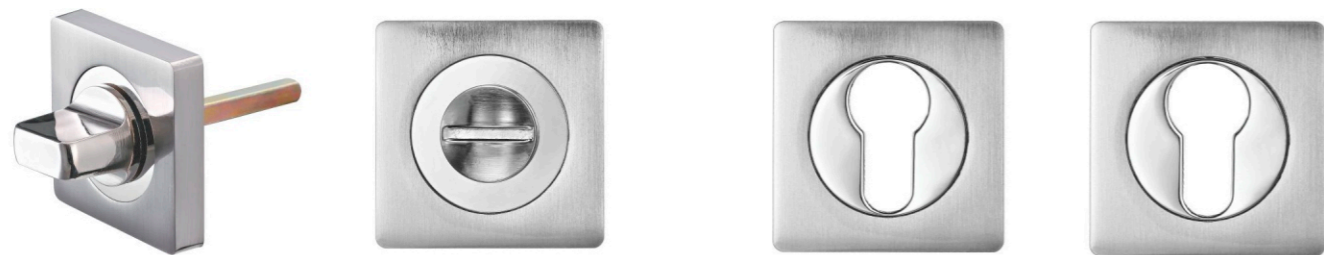
材质: 不锈钢 | Material: Stainless Steel | Материал: нержавейка
颜色: 青古铜/仿金/亮铬 | Finished: AB、GP、CP | Цвет: AB、GP、CP



ZS5-HL

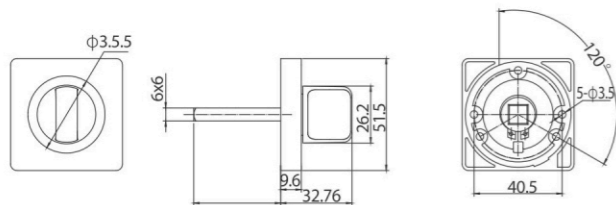
材质: 不锈钢 | Material: Stainless Steel | Материал: нержавейка
颜色: 青古铜/仿金/亮铬 | Finished: AB、GP、CP | Цвет: AB、GP、CP





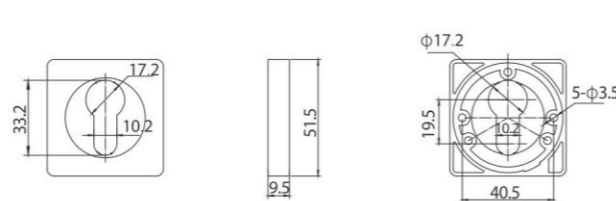
FZ14-196

材质: 铝合金 | Material: Aluminum Alloy | Материал: алюминий
颜色: 青古铜/仿金/亮铬 | Finished: AB、GP、CP | Цвет: AB、GP、CP



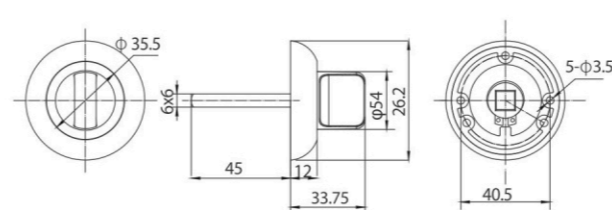
FZ14-HL

材质: 铝合金 | Material: Aluminum Alloy | Материал: алюминий
颜色: 青古铜/仿金/亮铬 | Finished: AB、GP、CP | Цвет: AB、GP、CP



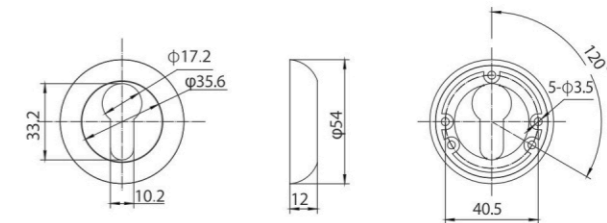
FZ16-196

材质: 铝合金 | Material: Aluminum Alloy | Материал: алюминий
颜色: 青古铜/仿金/亮铬 | Finished: AB、GP、CP | Цвет: AB、GP、CP



FZ16-HL

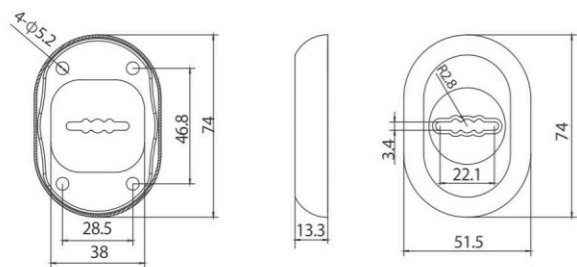
材质: 铝合金 | Material: Aluminum Alloy | Материал: алюминий
颜色: 青古铜/仿金/亮铬 | Finished: AB、GP、CP | Цвет: AB、GP、CP





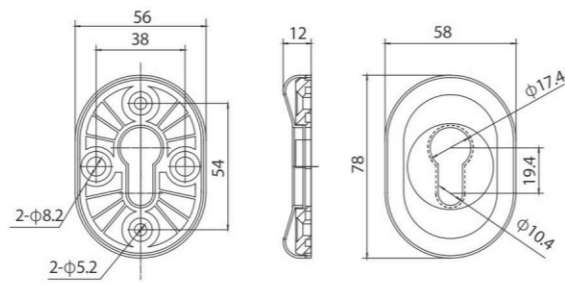
206

材质:铁 | Material: Iron | Материал: железо
颜色:青古铜/仿金/亮铬 | Finished: AB、GP、CP | Цвет: AB、GP、CP



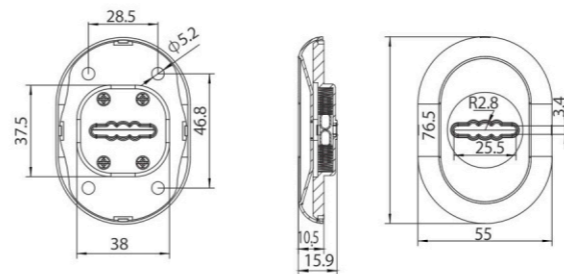
205

材质:铁 | Material: Iron | Материал: железо
颜色:青古铜/仿金/亮铬 | Finished: AB、GP、CP | Цвет: AB、GP、CP



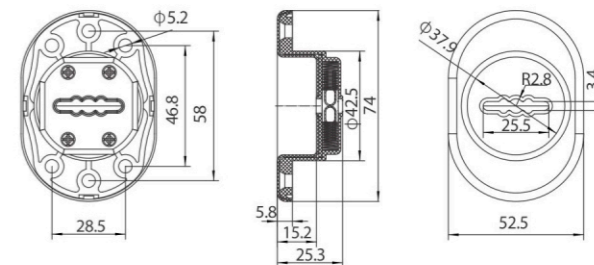
208

材质:铁 | Material: Iron | Материал: железо
颜色:青古铜/仿金/亮铬 | Finished: AB、GP、CP | Цвет: AB、GP、CP



209

材质:铁 | Material: Iron | Материал: железо
颜色:青古铜/仿金/亮铬 | Finished: AB、GP、CP | Цвет: AB、GP、CP





ZS2-W-YP

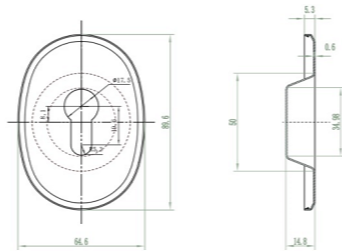
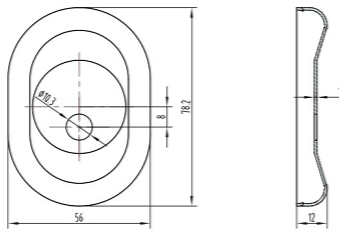
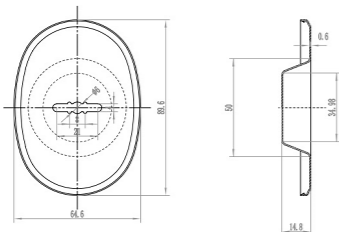


205-Y



ZS2-W-HL

材质:铁 | Материал:железо
颜色:青古铜/仿金/亮铬 | Цвет:AB、GP、CP
Material:Iron
Finished:AB、GP、CP



83

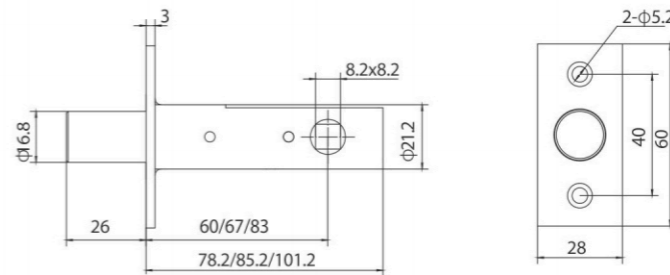


67



62

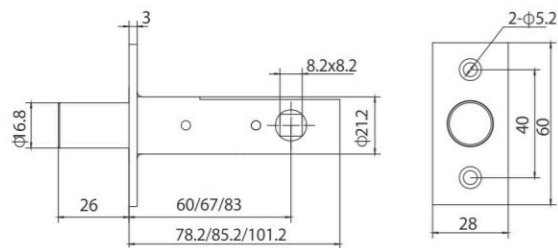
材质:铁 | Материал:железо
颜色:青古铜/仿金/亮铬 | Цвет:AB、GP、CP
Material:Iron
Finished:AB、GP、CP





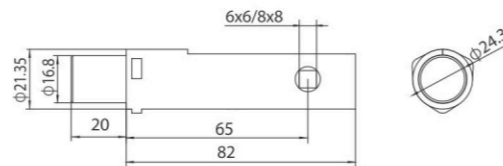
62-1/67-1

材质:铁 | Материал:железо | Material:Iron
颜色:青古铜/仿金/亮铬 | Цвет:AB、GP、CP | Finished:AB、GP、CP



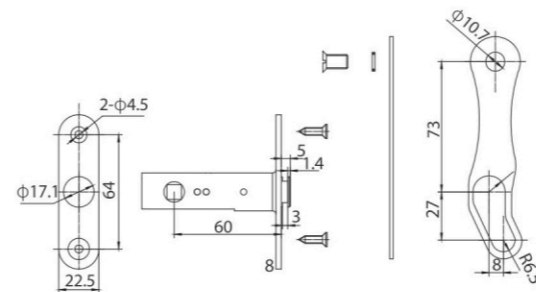
66

材质:铁 | Материал:железо | Material:Iron
颜色:青古铜/仿金/亮铬 | Цвет:AB、GP、CP | Finished:AB、GP、CP



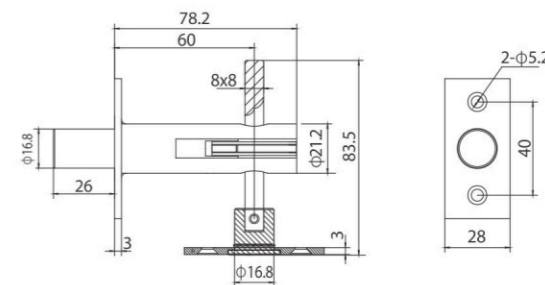
69

材质:铁 | Материал:железо | Material:Iron
颜色:青古铜/仿金/亮铬 | Цвет:AB、GP、CP | Finished:AB、GP、CP



64

材质:铁 | Материал:железо | Material:Iron
颜色:青古铜/仿金/亮铬 | Цвет:AB、GP、CP | Finished:AB、GP、CP





136



材质:铁/锌
颜色:青古铜/仿金/亮铬

Material: Iron/Zinc
Finished: AB、GP、CP



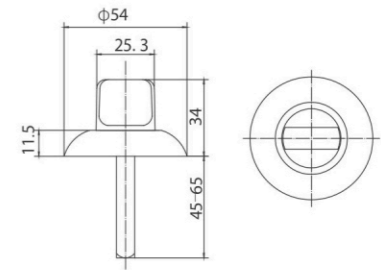
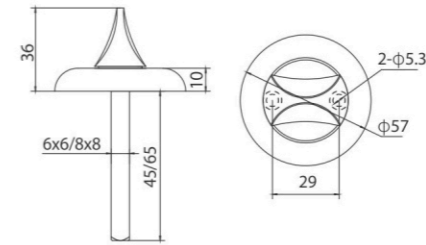
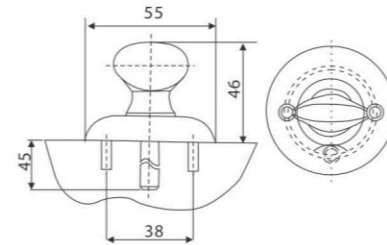
106

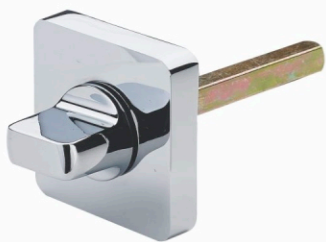


Материал: железо/цинковый сплав
Цвет: AB、GP、CP



126





FZ10-126



146



176

材质: 锌合金

Surface Material: Zinc Alloy

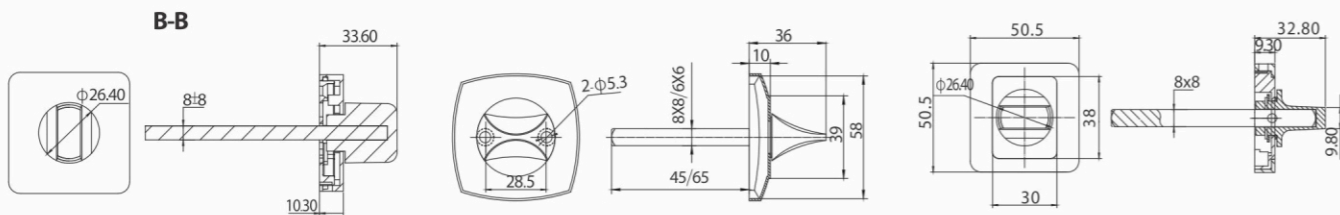
Материал поверхности:

颜色: 青古铜/仿金/亮铬

Finished: AB、GP、CP

цинковый сплав

Цвет: AB、GP、CP



配件系列
Fitting Series
Фурнитуры



P57/P58



MY001-70/130



MY002-50/90

MY002-35/60



MY001-50/90



MY003-50/90

MY003-70/130

产品尺寸(size):
60mm-120mm



SX001

产品尺寸(size):
60mm-120mm



SX003

产品尺寸(size):
60mm-120mm



SX004

产品尺寸(size):
60mm-120mm



SX005

材质:铁 | Материал: железо
Material: Iron



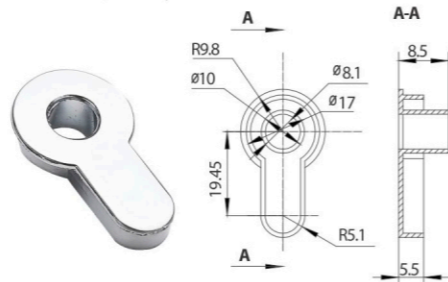
方杆

材质:铁 | Материал: железо
Material: Iron



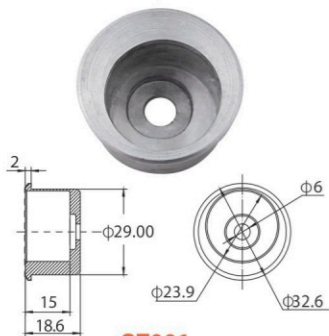
MYP

材质:锌合金 | Материал: цинковый сплав
Material: Zinc Alloy



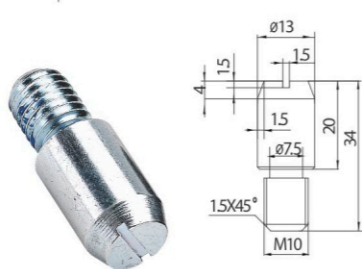
SK001

材质:铝合金 | Материал: алюминий
Material: Aluminum Alloy



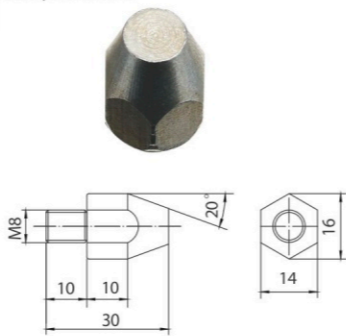
QT001

材质:铁 | Материал: железо
Material: Iron



BXD014

材质:铁 | Материал: железо
Material: Iron



BXD14-M8

材质:铁 | Материал: железо
Material: Iron



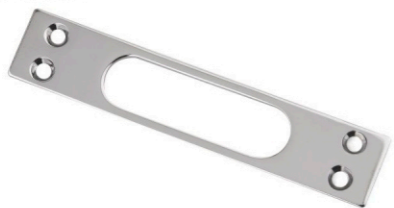
JL004

材质:铁 | Материал: железо
Material: Iron

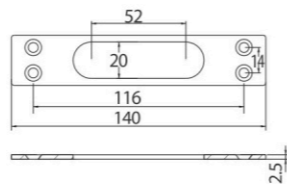


CX001

材质:铁 | Материал:железо
Material: Iron



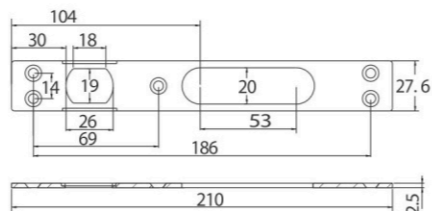
KB002



KB002



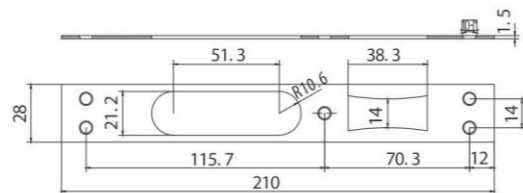
KB001



KB001

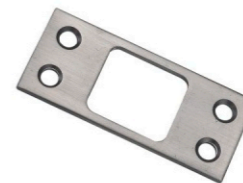


KB003

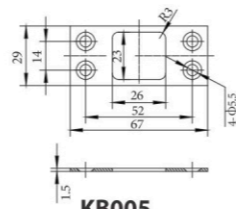


KB003

材质:铁 | Материал:железо
Material: Iron



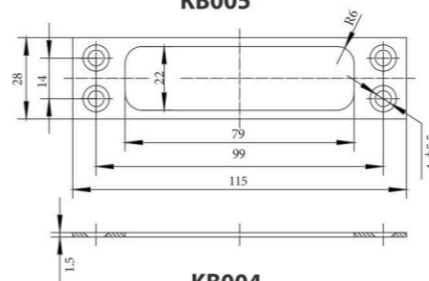
KB005



KB005



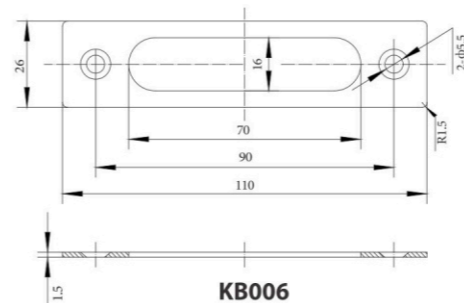
KB004



KB004



KB006



KB006